

ASSEMBLY ORDER SHEET

RNA Solutions

Order No: W0200031

Item Code: WAGON-2189
Description: Standard Green Wagon
Order Qty: 1 (Each)
Order Source: Manual

Order Status: Open
Order Date: 20/01/2009
Tracking Code:

Scheduling Information

Req Date: 20/01/2009
Setup Duration: 0 (Hours)
Run Duration: 9.85 (Hours)

Assembly Start: 20/01/2009
Assembly Finish: 21/01/2009

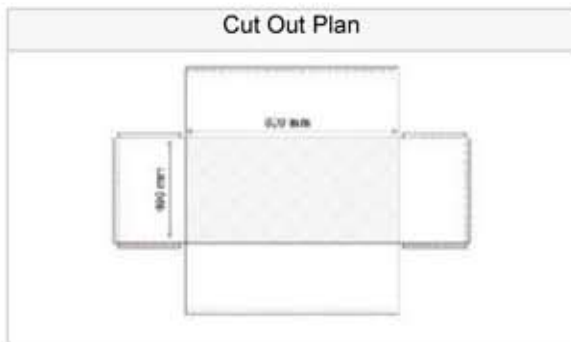
Resources Required

Step	Resource Type	Resource Name
Cutting	Employee	Bob Drum
Welding	Employee	Keith Rogers
Packing	Employee	John Redmond
Packing	Asset	Fork Lift
Painting	Employee	Jane Steel
Assembly	Employee	Bob Drum
Assembly	Employee	Keith Rogers
Packing	Employee	Jane Steel

Order Documents

Document Name	Document Path
Cutting Plan	C:\Program Files\Ostendo\DemoFiles\WagonCutoutPlan.jpg

Order Images



Cutting

Seq: 10 **Description:** Cutting Step & Folding

Cut out the wagon body as per cutting plan using the following dimensions:

- 1) Floor area is 800mm x 400mm with sides of 250mm with a 20mm flat for all 4 sides*
- 2) Make sure the ends have an additional 20mm flap for spot welding to the main 800mm sides*

Fold the body following the supplied drawing

Line #	Code Type	Code	Description	Unit	Qty
10	Item Code	510-2169	Sheet-Stainless Steel-1200mmx2400mm	Each	1

ASSEMBLY ORDER SHEET

RNA Solutions

Order No: W0200031

Line #	Code Type	Code	Description	Unit	Qty
20	Labour Code	LAB-ASSEMBLY	Assembly Labour	Hours	2.25
110	Item Code	300-2163	Nut-Stainless Steel-12mm	Each	12

Welding

Seq: 20 Description: Welding Step

Spot weld the ends to the main sides

Line #	Code Type	Code	Description	Unit	Qty
30	Labour Code	LAB-WELDING	Standard Welding Labour	Hours	2

Painting

Seq: 30 Description: Painting Step

Apply 2 coats of paint to the body and allow 4 hours to dry before moving to the next step

Line #	Code Type	Code	Description	Unit	Qty
40	Labour Code	LAB-PAINTING	Standard Painting Labour	Hours	0.5
50	Item Code	1500-2185	Green Paint	Litre	1.5

Assembly

Seq: 40 Description: Standard Assembly Step

*Fit front and rear wheel assemblies.
Fit handle to front wheel assembly.
Ensure all nuts are tightened.*

Line #	Code Type	Code	Description	Unit	Qty
60	Item Code	1800-2190	Rear Wheel Assembly	Each	1
70	Item Code	1800-2191	Front Wheel and Steering Assembly	Each	1
80	Item Code	1105-2184	Handle Assembly	Each	1
90	Item Code	110-2037	Washer-Stainless Steel-12mm	Each	12
100	Item Code	210-2136	Bolt-Stainless Steel-12mmx50mm	Each	12
105	Item Code	300-2163	Nut-Stainless Steel-12mm	Each	12
110	Labour Code	LAB-ASSEMBLY	Assembly Labour	Hours	1

QA

Seq: 50 Description: Quality Assurance Step

Check the following:

- 1) The paint finish is a high quality*
- 2) The Wheel nuts are tightened to the correct torque setting*
- 3) The steering & axles freely rotate*

Line #	Code Type	Code	Description	Unit	Qty
120	Labour Code	LAB-INSPECTION	Standard QA Labour	Hours	0.1

ASSEMBLY ORDER SHEET

RNA Solutions

Order No: W0200031

Packing

Seq: 60 Description: Packing Step

Remember to stick the 'Authentic Green Wagon' transfer to each side and include the Certificate of Authenticity when packing

Line #	Code Type	Code	Description	Unit	Qty
130	Labour Code	LAB-PACKING	Standard Packing Labour	Hours	0.25
Line Instructions					
<i>Paletise completed wagons, 5 to a pallet, use forklift to lift pallets to main warehouse shelving.</i>					
140	Item Code	900-2194	Authentic Green Wagon Transfer	Each	2

Recorded Notes (Notes recorded during the Order)